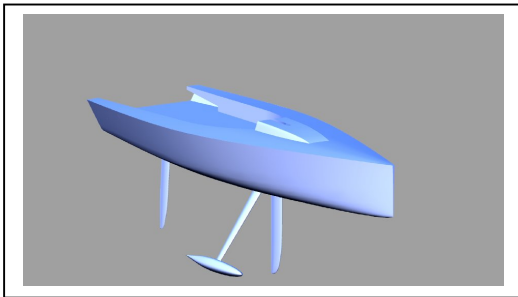




X-Treme 30: The concept



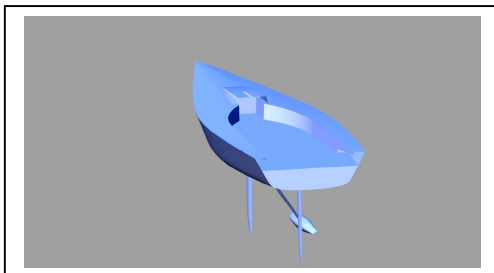
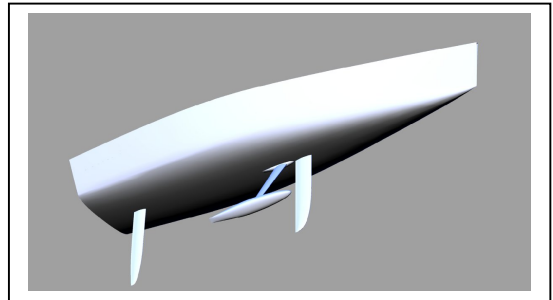
Summary:

A sportsboat which has the specifications of a 28.5 ft racer, designed to compete in the class of sportsboat, IRC and one-design racing. The X-Treme 30 possesses revolutionary handling features and is safe, fast and secure - under all circumstances! This sportsboat is easy to rig and launch and can be delivered together with a custom-designed container.

The X-Treme 30 represents top racing, mobility and international highly competitive fleet racing!

Specifications:

- Total weight of 1450 kg
- Canting keel with T6 keel-fin, draft of 2,20 meters and 725 kg bulb weight
- 'Holmatro' hydraulics system with exceptional handling features
- 'Hall spars' carbon boom and mast
- Mast can be split in two sections for easy container transport
- Optional: delivery with customised container, designed in colours and with logo of the sponsor or race team
- Container equipped with tooling, clothing lockers and sail storage



Easy canting keel handling

The keel handling is very simple due to a manual handle which is positioned on starboard as well as on portside and which pumps pressure into the accumulator. By simply pressing one button the keel will be pushed into full swing by the accumulator within only 8 seconds.

G-Force Yachts Nederland B.V.

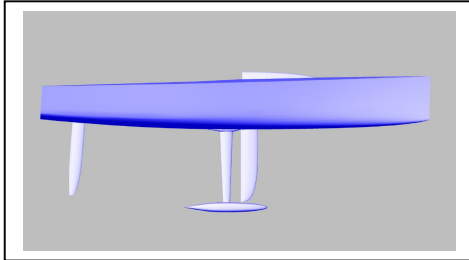
Buiten Walevest 15a, 3311 AD Dordrecht, The Netherlands. Tel.: +31657575175 / Fax: +31786318883

Registrated at the Chamber of Commerce of Rotterdam: 24448841

www.g-forceyachts.com / info@g-forceyachts.com



X-Treme 30: The concept

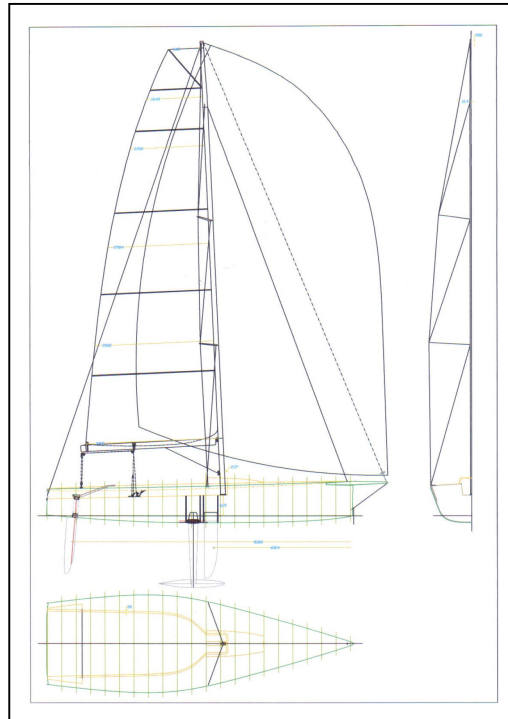


All hoses are made of Kevlar and no overpressure can occur as the hydraulic oil will rotate through a valve in the system. In light weather conditions or in the case that a full swing of the keel is not required, the accumulator can also be switched off and handled manually. The keel handling system works without any electronics which keeps it safe and simple. In case of a failure (e.g. pressure loss) the keel will lock itself mechanically in a centre position.

Transportation service

G-Force Yachts can take care of shipping your X-treme 30 to whatever (international) sailing-event you want to participate in. We will handle all transportation and document issues, you simply need to show up, launch the boat and race. We'll then also take care of transporting your boat back to its home destination.

Please contact us for more details and information at info@g-forceyachts.com



G-Force Yachts Nederland B.V.

Buiten Walevest 15a, 3311 AD Dordrecht, The Netherlands. Tel.: +31657575175 / Fax: +31786318883

Registered at the Chamber of Commerce of Rotterdam: 24448841

www.g-forceyachts.com / info@g-forceyachts.com